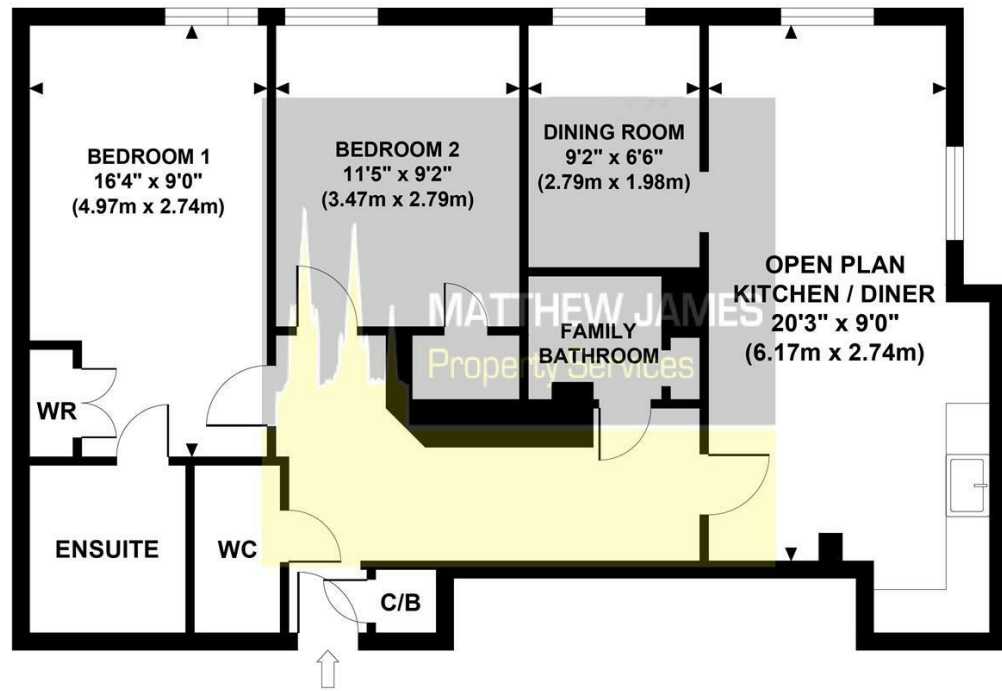


Floor Plan

39 ABBEY COURT
Approximate Gross Internal Area 772 sq ft / 71.70 sq m



Although every attempt has been made to ensure accuracy, all measurements are approximate and no responsibility is taken for any error, omission, or mid-statement. This floor plan is for illustrative purposes only and not to scale. Measured in accordance to RICS standards.

Area Map



Viewing

Please contact us on 02477 170170 if you wish to arrange a viewing appointment for this property or require further information.

These particulars, whilst believed to be accurate are set out as a general outline only for guidance and do not constitute any part of an offer or contract. Intending purchasers should not rely on them as statements of representation of fact, but must satisfy themselves by inspection or otherwise as to their accuracy. No person in this firm's employment has the authority to make or give any representation or warranty in respect of the property.

CONTACT INFORMATION

24a Warwick Row, Coventry CV1 1EY
02477 170170

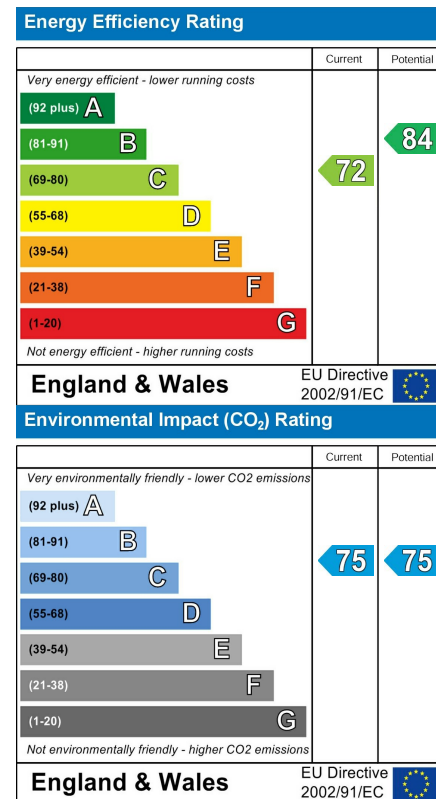
info@matthewjames.uk.com
www.matthewjames.uk.com

Facebook
Twitter

MATTHEW JAMES
Property Services



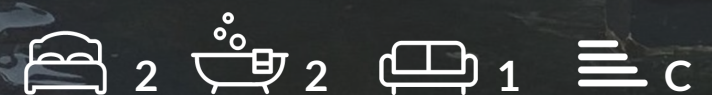
Energy Efficiency Graphs



Flat 39 Abbey Court, Priory Place

City Centre, Coventry CV1 5SA

£160,000





Description

TWO BEDROOMS... OPEN PLAN LIVING KITCHEN AREA... REDECORATED AND NEW FLOORING THROUGHOUT... SEPARATE DINING ROOM... MASTER EN-SUITE... SECURE GATED PARKING... CITY CENTRE LIVING... WALKING DISTANCE TO COVENTRY UNIVERSITY... PERFECT FOR THE INVESTOR OR PERSON THAT WANTS A CITY CENTRE LOCATION. Currently vacant, this property is perfect for those looking at their next or first investment or for someone looking to live in the City Centre. Located on the 3rd floor, it briefly comprises of two bedrooms, open plan living kitchen and dining area, family bathroom, master en-suite, double glazing and electric storage heating with secure allocated parking. Currently VACANT with NO UPWARD CHAIN, this property needs to be viewed to appreciate exactly what is being offered for sale. Call us now to book your immediate viewing.

- Two Bedrooms
- VACANT
- Open Plan Living
- Great Investment Opportunity
- Secure & Allocated Gated Parking
- Redecorated & New Flooring Throughout
- NO UPWARD CHAIN
- City Centre Location
- Master En-Suite
- Close To Coventry University

